



**GEOLOGICAL SURVEY OF CANADA  
OPEN FILE 7196**

**Mineral and energy resource assessment of the proposed  
Thaidene Nene National Park Reserve in the area of the  
East Arm of Great Slave Lake, Northwest Territories**

**D.F. Wright, E.J. Ambrose, D. Lemkow, and G.F. Bonham-Carter  
(Editors)**



**2013**



Natural Resources  
Canada

Ressources naturelles  
Canada

**Canada**



**GEOLOGICAL SURVEY OF CANADA  
OPEN FILE 7196**

**Mineral and energy resource assessment of the proposed  
Thaidene Nene National Park Reserve in the area of the East  
Arm of Great Slave Lake, Northwest Territories**

**D.F. Wright<sup>1</sup>, E.J. Ambrose<sup>2</sup>, D. Lemkow<sup>1</sup>, and G.F. Bonham-Carter<sup>3</sup>**

<sup>1</sup>Geological Survey of Canada, 601 Booth Street, Ottawa, ON K1A 0E8

<sup>2</sup>Ambrose and Associates Consulting Services, 31 Oakvale Avenue, Ottawa, ON K1Y 3S3

<sup>3</sup>110 Aaron Merrick Drive, Merrickville, ON K0G 1N0

**2013**

©Her Majesty the Queen in Right of Canada 2013

doi:10.4095/292447

This publication is available for free download through GEOSCAN (<http://geoscan.ess.nrcan.gc.ca/>).

**Recommended citation**

Wright, D.F., Ambrose, E.J., Lemkow, D., and Bonham-Carter, G.F. (ed.), 2013. Mineral and energy resource assessment of the proposed Thaidene Nene National Park Reserve in the area of the East Arm of Great Slave Lake, Northwest Territories; Geological Survey of Canada, Open File 7196. doi:10.4095/292447

Publications in this series have not been edited; they are released as submitted by the author.

**Cover photo**

Photograph looking east over Wildbread Bay from the Douglas Peninsula. Image courtesy of Ross Knight (2008).

# TABLE OF CONTENTS

## Executive Summary

D.F. Wright	
Introduction	1
Study Area	1
Compilation and Assessment Method	1
Assessment Results	3
References	12

## Introduction to the Thaidene Nene Mineral and Energy Resource Assessment (MERA)

D.F. Wright	
History of the Thaidene Nene MERA	13
Study Area	13
MERA Process and Methodology	13
Organization of this Report	18
Acknowledgements	23
References	23

## PART 1

### BEDROCK GEOLOGY STUDIES

#### Chapter 1. Bedrock Geology of the western Churchill Province and Taltson and Thelon Magmatic-Tectonic Zones, Thaidene Nene MERA Study Area

S. Tella, B.A. Kjarsgaard, and D. Lemkow

Introduction	27
Regional Setting	27
Acknowledgements	36
References	36
Appendix 1A.1. Petrographic observations of samples from the Taltson and Thelon magmatic-tectonic zones and parts of the Churchill Province	40

#### Chapter 2. Slave Craton Bedrock Geology, Thaidene Nene MERA Study Area

B.A. Kjarsgaard, J. Marshall, D.G. Pearson, D. Lemkow, O. van Breemen, A. DuFrane, and L. Heaman

Introduction	47
Bedrock Geology	48
Metamorphism	70
Economic Geology	70
Acknowledgements	70
References	70
Appendix 2A.1. U-Pb analytical procedures	74
Appendix 2A.2. Whole rock geochemistry sample preparation and analysis	75

#### Chapter 3. Proterozoic Geology of the East Arm Basin with Emphasis on Paleoproterozoic Magmatic Rocks, Thaidene Nene MERA Study Area

B.A. Kjarsgaard, D.G. Pearson, A. DuFrane, and L. Heaman

Introduction	77
Overview	80
Analytical Methods	80
Geology, East Arm Basin	84
Great Slave Supergroup	86
Discussion	95
Relationship to Mineralization	95
Acknowledgements	95
References	96
Appendix 3A.1. Whole-rock geochemistry data	98

**Chapter 4. U-Pb detrital zircon geochronology of clastic sedimentary rocks of the Paleoproterozoic Nonacho and East Arm basins, Thaidene Nene MERA study area**

O. van Breemen, B.A. Kjarsgaard, S. Tella, D. Lemkow, and L. Aspler

Introduction	119
Geology	119
Samples	124
Detrital Zircon Geochronology	125
Discussion	129
Acknowledgements	133
References	133
Appendix 4A.1. U/Pb SHRIMP results for detrital zircon from the Nonacho and Athapusco basins	136

**PART 2**

**SURFICIAL GEOLOGY STUDIES**

**Chapter 5. Surficial Geology of the Proposed National Park Reserve on the East Arm of Great Slave Lake**

D.E. Kerr, R.D. Knight, D.R. Sharpe, D.I. Cummings, H.A.J. Russell, and B.A. Kjarsgaard

Introduction	143
Methods	143
Regional Setting	143
Previous Work	144
Surficial Deposits	146
Bedrock and Associated Erosional Features	149
Glacial History	151
References	152

**Chapter 6. Glaciofluvial Features and their Significance in the Proposed National Park Reserve, East Arm of Great Slave Lake**

D.R. Sharpe, H.A.J. Russell, and R.D. Knight

Introduction	155
Background	155
East Arm Glaciofluvial Features	163
Sediment Dispersal and Transport Data	173
Summary and Conclusions	186
Acknowledgements	188
References	189

**Chapter 7. Gold grain counts from till and esker samples in the proposed national park reserve, East Arm of Great Slave Lake**

D.E. Kerr, R.D. Knight, D.R. Sharpe, D.I. Cummings, B.A. Kjarsgaard, and H.A.J. Russell

Introduction	191
Sample Collection and Methodology	191
Results	193
Implications and Assessing Mineral Potential	197
References	197
Appendix 7A.1. Details of size and shape of all gold grains found in till and esker samples	198
Appendix 7A.2. Details of size and shape of gold grains found in till samples	249
Appendix 7A.3. Details of size and shape of gold grains found in esker samples	255

**CHAPTER 8. Dispersal and Provenance Studies of Clasts in till and Eskers in the Proposed National Park Reserve, East Arm of Great Slave Lake**

D.E. Kerr, R.D. Knight, D.R. Sharpe, D.I. Cummings, B.A. Kjarsgaard, and H.A.J. Russell

Introduction	161
Sample Collection and Methodology	262
Results	263
Implications for Assessing Mineral Potential	267
References	268
Appendix 8A.1. Granite and buff sandstone pebbles found in till samples	269
Appendix 8A.2. Granite and buff sandstone pebbles found in esker samples	269

**Chapter 9. Significance of Indicator Minerals from Till and Esker Samples, Thaidene Nene MERA Study Area**

B.A. Kjarsgaard, R.D. Knight, D.R. Sharpe, D.E. Kerr, D.I. Cummings, H.A.J. Russell, and D. Lemkow

Introduction	279
Methods	279
Analytical Procedures	280
Discussion	280
Acknowledgements	294
References	294
Appendix 9A.1. Overview of surficial sampling design and practice	296
Appendix 9A.2. Indicator mineral counts	299
Appendix 9A.3. EMP - Carleton University Cameca Camebax	312

**Chapter 10. Till Geochemistry Studies of the Thaidene Nene MERA Study Area**

B.A. Kjarsgaard, R.D. Knight, E.C. Grunsky, D.E. Kerr, D.R. Sharpe, D.I. Cummings, H.A.J. Russell, J.A. Kerswill, and D.F. Wright

Introduction	313
Methods	313
Presentation and Interpretation of Till Geochemical Data	313
Acknowledgements	336
References	336

**PART 3**

**MINERAL DEPOSIT STUDIES**

**Chapter 11. Potential for Kimberlite-Hosted Diamond Occurrences, Thaidene Nene MERA Study Area**

B.A. Kjarsgaard

Introduction	339
Potential for Additional Kimberlite Pipes in the Thaidene Nene Study Area	339
Indicator Mineral Results from 2008 and 2009 Surficial Sampling	342
Discussion	346
Acknowledgements	347
References	347

**Chapter 12. Potential for Chromite Mineralization, East Arm of Great Slave Lake**

B.A. Kjarsgaard

Introduction	349
Nature of the Source Rock	352
Mineral Potential	354
Discussion	356
Acknowledgements	356
References	356

**Chapter 13. Potential for Rare Earth and Rare Metal Deposits, Thaidene Nene MERA Study Area**

B.A. Kjarsgaard

Introduction	357
Known Occurrences	357
Mineralization Potential in the Area of Interest	357
Acknowledgements	361
References	361

**Chapter 14. Uranium Potential and Levels of radioactivity in the Proposed National Park Area, Thaidene Nene MERA Phase II Report**

C.W. Jefferson

Abstract	363
Introduction	363
Current Uranium Assessment	363
Overall Radioactivity in the Study Area	373
Conclusions	373
Acknowledgements	373
References	373

**Chapter 15. Mineral Resource Assessment for Volcanogenic Massive Sulphide Deposits, East Arm of Great Slave Lake, N.W.T.**

J.W. Lydon, J.A. Kerswill, and R. Bretzlaff

Part A. General Background of Volcanogenic Massive Sulphide Deposits	377
Part B. Potential for volcanogenic Massive Sulphide Deposits in the Area of Interest	
East Arm of Great Slave Lake	388
Part C. Summary	413
Acknowledgements	415
References	415
Appendix 15A.1. Geochemistry of selected volcanic rocks from the deposits and showings within the Area of Interest	420

**Chapter 16. Potential for Magmatic Ni-Cu-Platinum Group Elements-Sulphide Deposits in the Area of the Proposed Thaidene Nene National Park, East Arm of Great Slave Lake**

S.S. Gandhi, D. Lemkow, and J.A. Kerswill

Magmatic Ni-Cu-Platinum Group Elements-Sulphide Type of Deposits and Subtypes	423
Rutledge Lake Area	423
Exploration and Assessment Results	428
Metallogeny of the Rutledge River Basin Domain	429
Considerations for Resource Potential	430
Blatchford Lake Area	430
Smart Lake Area	432
Concluding Remarks	433
Acknowledgements	433
References	433

**Chapter 17. Potential for Vein-Hosted Copper Mineralization in the Area of the Proposed Thaidene Nene National Park, East Arm of Great Slave Lake**

S.S. Gandhi, J.A. Kerswill, and D. Lemkow

Introduction	437
Subdivision of Vein-Hosted Copper Deposits	437
East Arm Basin	437
Slave Craton	457
Acknowledgements	460
References	460

**Chapter 18. Potential for Mississippi Valley-type Lead-Zinc Deposits in the Artillery Lake Area, Northwest Territories**

S.S. Gandhi and J.A. Kerswill

Introduction	463
Lithostratigraphy of the Artillery Lake Formation	463
Tectonic Evolution of the Artillery Lake Basin	463
Stratigraphic and Structural Control of Mineralization	466
Mineral and Metal Associations	467
Fluid Inclusions in Quartz Associated with Sulphides	467
Thermal State of Bitumen	467
Lead Isotope Ratios of Galena Separates	467
Metallogeny of the Artillery Lake Basin	468
Resource Potential	469
Exploration Guides	470
Acknowledgements	470
References	470
Appendix 18A.1. Analyses of major, minor, and trace elements in samples from showings A-4, A-11, and A-24 at Artillery Lake	472

**Chapter 19. Potential for Iron Oxide-Copper-Gold and Affiliated Deposits in the Proposed National Park Region of the East Arm of Great Slave Lake, Northwest Territories: Insights from the Great Bear Magmatic Zone and Global Analogs**

E.G. Potter, L. Corriveau, and J.A. Kerswill

Introduction	477
Iron Oxide-Copper-Gold Systems	477
Historical Occurrences in the East Arm	481
Mineral Resource Assessment Guidelines Specific to East Arm	485
Resource Potential	488
Acknowledgements	489
References	489

**Chapter 20. Mineral Resource Assessment for Sedimentary Exhalative Deposits, East Arm of Great Slave Lake, Northwest Territories**

J.W. Lydon, J.A. Kerswill, and R.E. Bretzlaff

General Background of Sedimentary Exhalative Deposits	495
Economic Importance OF Sedex Deposits	495
Classification of Sedex Deposits	497
Geological Characteristics of Sedex Deposits	498
Genetic Models	507
Exploration Methods	510
Assessment of the Potential for Sedex Deposits in the Proposed National Park East Arm of Great Salve Lake	510
General Geology of the East Arm Area	510
Sedex Potential of Paleoproterozoic Supracrustal Rocks	513
Geochemical Indications from Glacial Till for a Sedex Ore System	517
Resource Model Assessment from Geochemistry of Glacial Till	517
Conclusions and Recommendations	520
Summary	521
Conclusions	522
Acknowledgements	523
References	523

## PART 4

### GEOPHYSICS STUDIES

#### Chapter 21. Subcontinental Mantle Lithosphere Study Using Teleseismic Data for the East Arm of Great Slave Lake

D.B. Snyder

Introduction .....	529
Fieldwork .....	529
Earthquake Data Analysis .....	529
Interpretation .....	536
Conclusions .....	540
References .....	540

## PART 5

### HYDROCARBON ASSESSMENT

#### Chapter 22. Petroleum Resource Potential for the Proposed National Park Reserve, East Arm of Great Slave Lake

P. K. Hannigan

Summary .....	541
Introduction .....	541
Regional Geological Setting and History .....	541
Hydrocarbon Prospectivity of the Canadian Shield in the Northwest Territories .....	546
Petroleum Potential of the Thaidene Nene Study Area .....	548
Conclusions .....	550
References .....	550

## PART 6

### MINERAL DEPOSIT MODELLING

#### Chapter 23. Modelling Mineral Potential for the Thaidene Nene Study Area, East Arm of Great Slave Lake, Northwest Territories, Using GIS-Based Analytical Methods

D.F. Wright, J.A. Kerswill, B.A. Kjarsgaard, S.S. Gandhi, C.W. Jefferson, J.W. Lydon,  
E.G. Potter, R.E. Bretzlaff, and G.F. Bonham-Carter

Executive Summary .....	553
Introduction .....	555
Study Area .....	556
Bedrock Geology .....	556
Regional Setting .....	558
Mineral Occurrences .....	559
Quaternary Geology .....	560
Modelling Method .....	561
Results .....	564
Overall Mineral Potential .....	614
Summary and Conclusions .....	624
Acknowledgements .....	624
References .....	624
Appendix 23A.1. Mineral occurrence data .....	629
Appendix 23A.2. Geological evidence .....	638
Appendix 23A.3. Till geochemical data .....	639
Appendix 23A.4. Mineral-grain data .....	640
Appendix 23A.5. Geophysical data .....	640
Appendix 23A.6. Python scripts used for the thirteen exploration models .....	641

## **PART 7**

### **DIGITAL SUPPLEMENTS**

**Digital Supplement 1. Bedrock geology of the proposed Thaidene Nene National Park Reserve in the area of the East Arm of Great Slave Lake, Northwest Territories, scale 1:500,000**

B.A. Kjarsgaard, S. Tella, and D. Lemkow

**Digital Supplement 2. Surficial geology map, East Arm MERA study area, scale 1:250,000**

D.E. Kerr, R.D. Knight, R.D. Sharpe, D.I. Cummings, and B.A. Kjarsgaard

**Digital Supplement 3. Digital geoscience database: A contribution to the mineral and energy resource assessment of the area of interest for the proposed Thaidene Nene National Park Reserve**

D. Lemkow and D.F. Wright

**Digital Supplement 4. Contoured single element maps of till geochemical data, East Arm MERA study area**

R. Knight and A. Plourde



# EXECUTIVE SUMMARY

D.F. Wright

Geological Survey of Canada, 601 Booth Street, Ottawa, Ontario K1A 0E8

## INTRODUCTION

In 1970, an area of approximately 7400 km<sup>2</sup> comprising the East Arm of Great Slave Lake and adjacent lands and waters was withdrawn under the Territorial Lands Act for a proposed national park (Fig. 1). However, there was little activity toward creating the park until the early 1980s when negotiations for a national park resumed. At that time the Geological Survey of Canada (GSC) published an Open File report (Roscoe et al., 1987) documenting a mineral and energy resource assessment (MERA) for the Area of Interest (AOI) between Artillery Lake and Hearne Channel on the East Arm of Great Slave Lake. In October 2002, the Federal Government announced its Action Plan to Protect Canada's Natural Heritage and as part of this plan, the Federal Government committed to the expansion of the national parks system. The Lutsel K'e Dene First Nation (LKDFN) formally agreed to enter into negotiations with Canada for planning a protected area in their traditional territory in 2004 and defined 57,000 km<sup>2</sup> (named Thaidene Nene – Land of the Ancestors) for consideration as a national park. In October 2006, Parks Canada Agency and the Lutsel K'e Dene First Nation signed a three (3) year Memorandum of Understanding (MOU) within the Akaitcho Process, agreeing to work cooperatively towards completing work on aspects of a feasibility study for the possible establishment of a national park. In 2007, a larger land parcel was withdrawn for a five year period under the Territorial Lands Act for proposed national park purposes. This area in combination with the original 1970 land withdrawal (approximately 33,500 km<sup>2</sup>) became the current AOI for this national park assessment (Fig. 1).

The current AOI encompasses regions with deposit types that were previously known (e.g. Ni-Cu, rare metals) but not considered in detail by Roscoe et al. (1987) because they were outside the study area being evaluated at the time. In addition, deposit types not known to exist in this area in the 1980s, for example kimberlite-hosted diamonds, have been identified in the region of/proximal to the expanded AOI. Furthermore, new and revised mineral deposit models have been developed that could be applied to the area of the proposed park and thereby update knowledge about areas of mineral interest.

This MERA was thus undertaken for the new, expanded AOI to complement and expand the previous MERA.

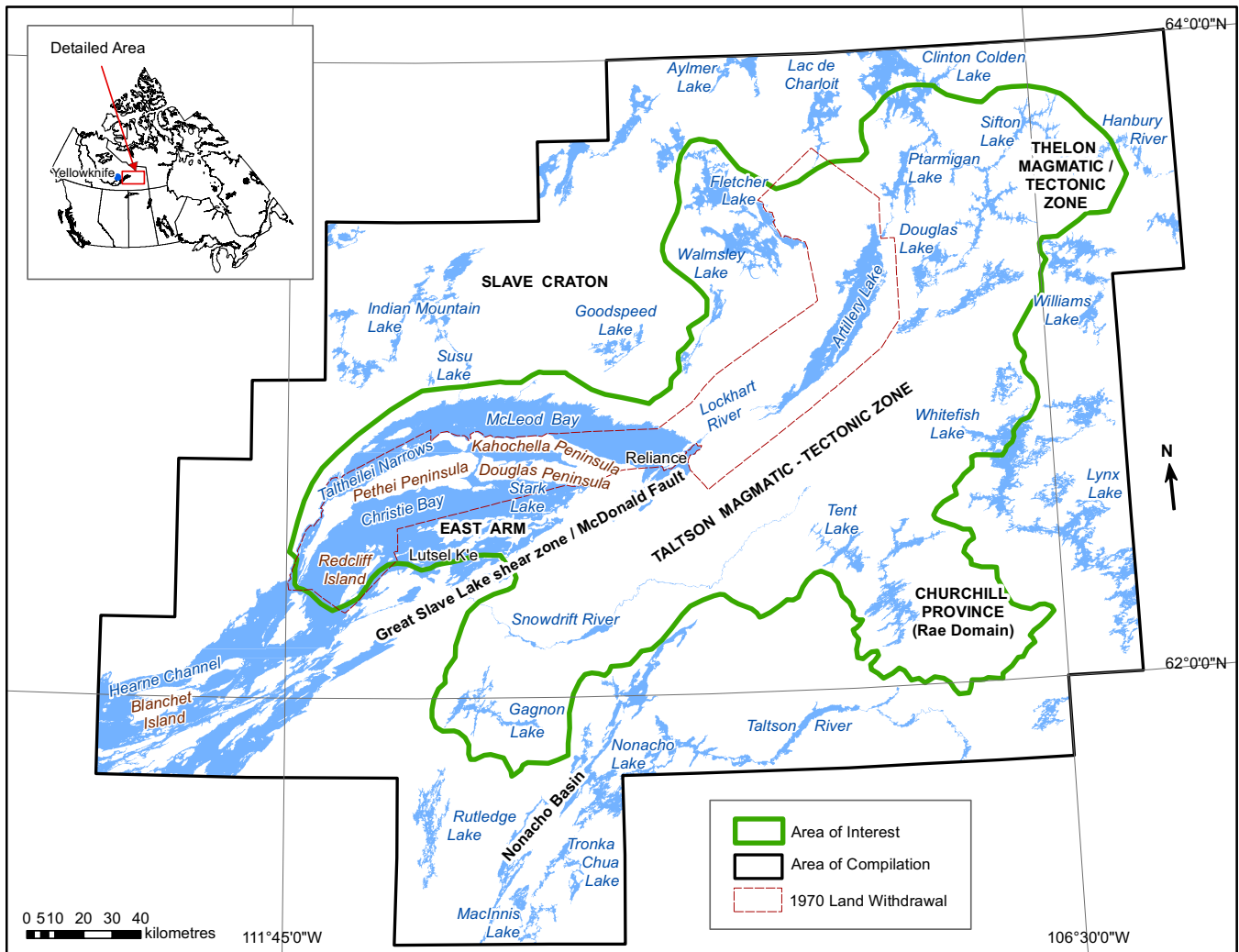
## STUDY AREA

The study area evaluated for mineral and energy potential includes the expanded AOI plus an additional area of up to 30 km surrounding the AOI (Fig. 1). The combined area, here termed the Area of Compilation (AOC), encompasses approximately 79,300 km<sup>2</sup>. The irregular boundary of the expanded AOI (hereafter termed just AOI) is based largely on drainage patterns. It extends approximately 315 km northeast from Hearne Channel in the East Arm of Great Slave Lake, up to and including Sifton Lake. The 33,500 km<sup>2</sup> AOI includes the Pethei, Kahochella, and Douglas peninsulas, Redcliff Island, and extensive water areas in McLeod and Christie bays in Great Slave Lake as well as Artillery Lake. In order to provide adequate understanding of the geology and metallogenic domains that transect the core of the AOI, it was deemed necessary to expand the study area to that outlined by the AOC (Fig. 1).

## COMPILATION AND ASSESSMENT METHOD

The MERA includes field surveys, conducted in 2008 and 2009, laboratory studies, and analyses in order to obtain improved geochemical and geological knowledge. This additional knowledge improves the level of certainty and confidence in assessing the mineral and energy potential. This MERA report has five major components:

1. **Bedrock Geology.** A total of 566 field sites were documented over two field seasons, resulting in an updated bedrock geology map, which was the essential context for assessing the potential for various resource deposits in the AOC.
2. **Mineral and Hydrocarbon Occurrences.** During the two field seasons, 51 mineral occurrences were examined to verify the commodity and investigate the geological setting. Based on the data compiled from existing sources and site visits, the mineral occurrences were interpreted to represent fifteen different deposit types, thirteen of which have been qualitatively assessed.
3. **Mantle Teleseismic Tomography.** Ten teleseismic



**Figure 1.** Map showing Area of Compilation (AOC) and Area of Interest (AOI) for the currently proposed park. The location of an earlier AOI (1970 land withdrawal) is also shown.

stations were installed in a northwest-trending linear array, crossing Artillery Lake and approximately bisecting the AOC. Data were collected from these stations between July 2008 and June 2010. Though not conclusive, interpretation of the data suggests that the mantle lithosphere, which is presumed to be the source of the diamondiferous kimberlite of Gahcho Kué, underlies all of the AOI.

4. Quaternary Geology. Data obtained from fieldwork resulted in an updated surficial materials map, a till geochemistry database, an indicator mineral database, and a more comprehensive understanding of glacial and fluvial flow directions.
5. GIS Database Compilation and Resource Potential Modelling. A GIS-based procedure has been systematically applied to assess the mineral potential in the AOI as well as the expanded AOC. Thirteen mineral-deposit types were selected as being the most likely to occur in the area.

For each deposit type, a resource potential model

was developed and applied, based on geological, structural, geochemical, mineralogical, and geophysical evidence that has been captured in a digital database as raster maps. The spatial data were assembled by compiling knowledge from existing maps and mineral-occurrence databases. A new database of mineral occurrences (deposits, drilled showings or prospects, and showings;  $n=499$ ) was compiled and classified according to the different mineral-deposit types; this database provided key information for evaluating mineral potential. In addition, fieldwork during 2008 and 2009 resulted in new geochemical and mineralogical data from till and esker samples, updated the geological maps, and supplementary information from selected mineral occurrences.

The raster evidence maps that constitute the assessment guides for each deposit type were combined using a scoring and weighting system, fine-tuned by experts in each deposit type under consideration. A “knowledge-driven” weighted-overlay approach was applied

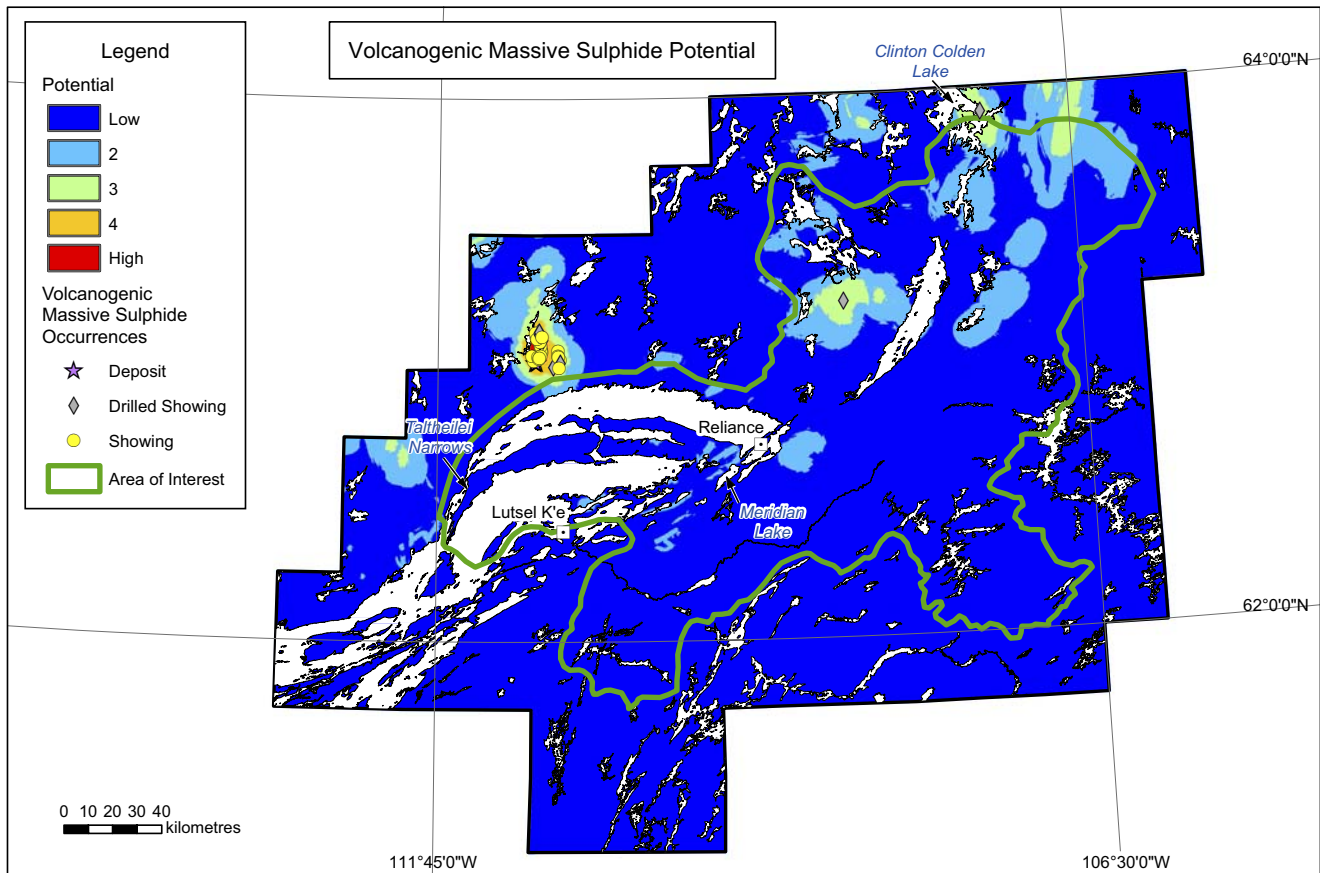


Figure 2. Map showing the modelled potential for volcanogenic massive sulphide occurrences.

(as opposed to a “data-driven” approach that uses a statistical prediction method) yielding a mineral potential map for each of the thirteen deposit types. The resulting predictive maps rated mineral potential as scores ranging from 1 to 5, which correlates to 1 representing low potential; 2, low-to-moderate; 3, moderate; 4, moderate-to-high; and 5 representing high potential.

**ASSESSMENT RESULTS**

**1. Volcanogenic massive sulphide deposits**

The Indian Mountain Belt includes areas rated as having both high and moderate-to-high potential (scores of 5 and 4) for volcanogenic massive sulphide (VMS) deposits, with several deposits and numerous prospects and showings. These prospective areas lie entirely outside the AOI, although the zone with moderate-to-high potential (score = 4) extends close to the northern boundary of the AOI. In the vicinity of Clinton-Colden Lake, an area with two zones that also have moderate-to-high VMS potential (score = 4) straddles the AOI boundary; a drilled showing falls within this area, just north of the AOI boundary. (Fig. 2)

**2. Kimberlite-hosted diamonds**

A relatively large area with high and moderate-to-high potential (scores of 5 and 4) is located west of

Walmsley Lake, straddling the AOI boundary. Although no occurrences in this area fall within the AOI, three drilled showings are just outside the AOI boundary. The deposits and prospects that comprise Gahcho Kué lie between 4 and 5 km outside the AOI. A relatively small zone lies about 40 km northwest of Gahcho Kué, near the boundary of the AOC; this zone has a moderate-to-high diamond potential (score = 4) and includes a drilled showing. (Fig. 3)

**2. Peraluminous granite-pegmatite rare metals.**

An area north of Hearne Channel, which is well west of the AOI, has high and moderate-to-high potential (scores of 4 and 5). This is an area with deposits, prospects, and showings. (Fig. 4)

**3. Peralkaline-syenite rare-metals**

Mineral potential ratings of high and moderate-to-high (scores of 4 and 5) occur in an area also northwest of the Hearne Channel (Thor Lake), but further west than the area with granite-pegmatite rare-metal potential. This prospective zone includes deposits (Nechalacho Project) but is also well outside the AOI. (Fig. 5)

**4. Lode gold**

There are three areas with moderate-to-high potential (a score of 4) for lode gold near the northern

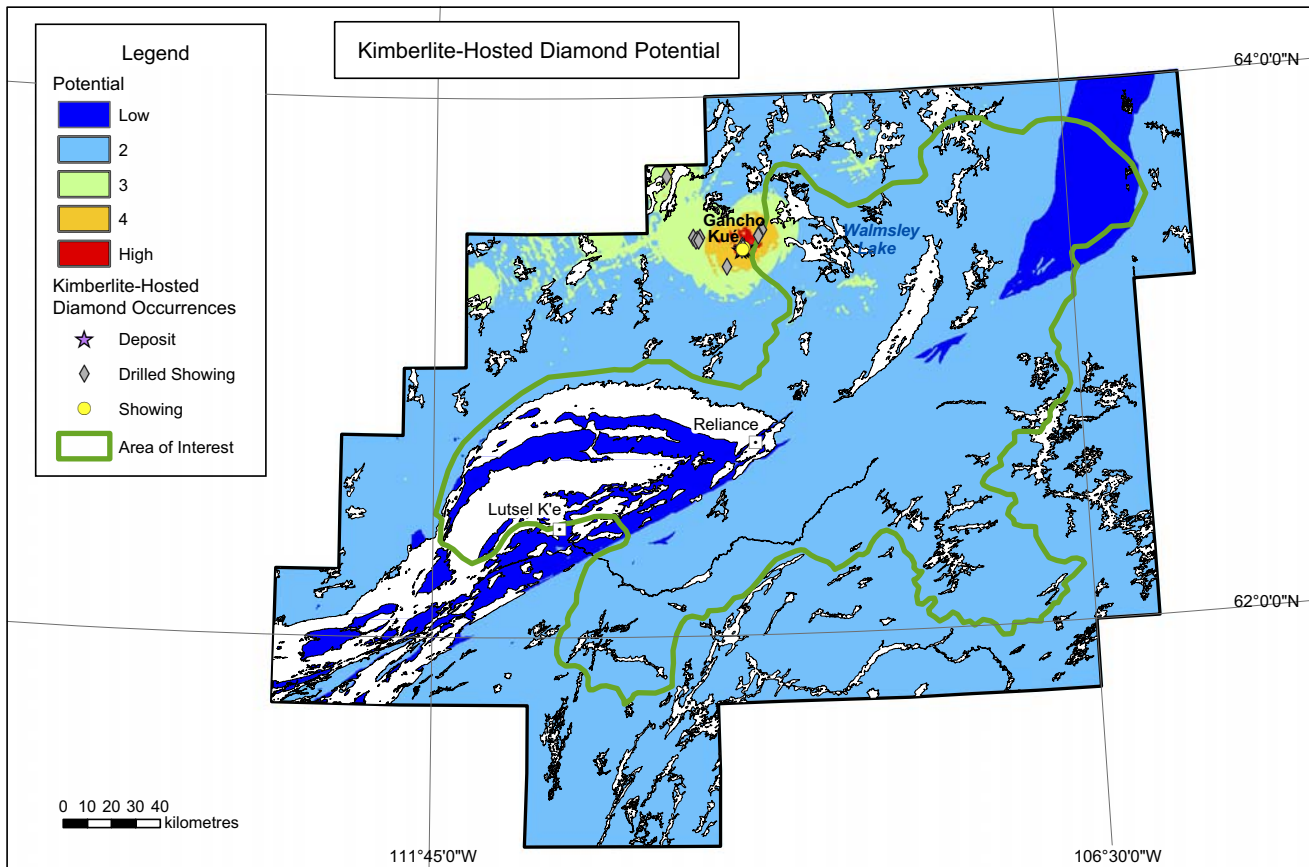


Figure 3. Map showing the modelled potential for kimberlite-hosted diamond occurrences.

boundary of the AOI. An area just west of Ptarmigan Lake lies entirely within the AOI, and an area near Fletcher Lake lies mostly within the AOI. The third area lies about 6 km outside the northern boundary of the AOI. Although there are no lode gold occurrences in these areas, they are regarded as prospective because of favourable evidence from mineral grain counts and from geochemical analyses of till samples, as well as the presence of favourable rock types (Fig. 6).

##### 5. Vein-hosted uranium

There are many occurrences of vein-hosted uranium mineralization in the Area of Compilation. A large area south of the AOI (Nonacho Lake, Tronka Chua Lake, and MacInnis Lake areas) has high and moderate-to-high potential (scores of 5 and 4), with one deposit being located in this zone. There are two relatively small areas that have moderate-to-high potential (score = 4) for this deposit type within the AOI, but these are near the AOI boundary, close to Tent Lake. The larger of these areas has several prospective zones, one of which includes a showing. (Fig. 7)

##### 6. Sandstone-hosted uranium

Several areas within the AOI have moderate potential (score = 3) but none have moderate-to-high or

high potential (score = 4 or 5). These areas are generally proximal to the McDonald Fault system and extend from near Wilson Island west of the AOI through a central zone that straddles the AOI boundary east of Lutsel K'e to a zone near Reliance in the east. Twenty-three of the forty sandstone-hosted uranium occurrences are located in these zones. Another area with moderate potential, which is largely within the AOI, includes a zone proximal to Taltheilei Narrows and extends across several islands in McLeod Bay. No occurrences are known there (Fig. 8).

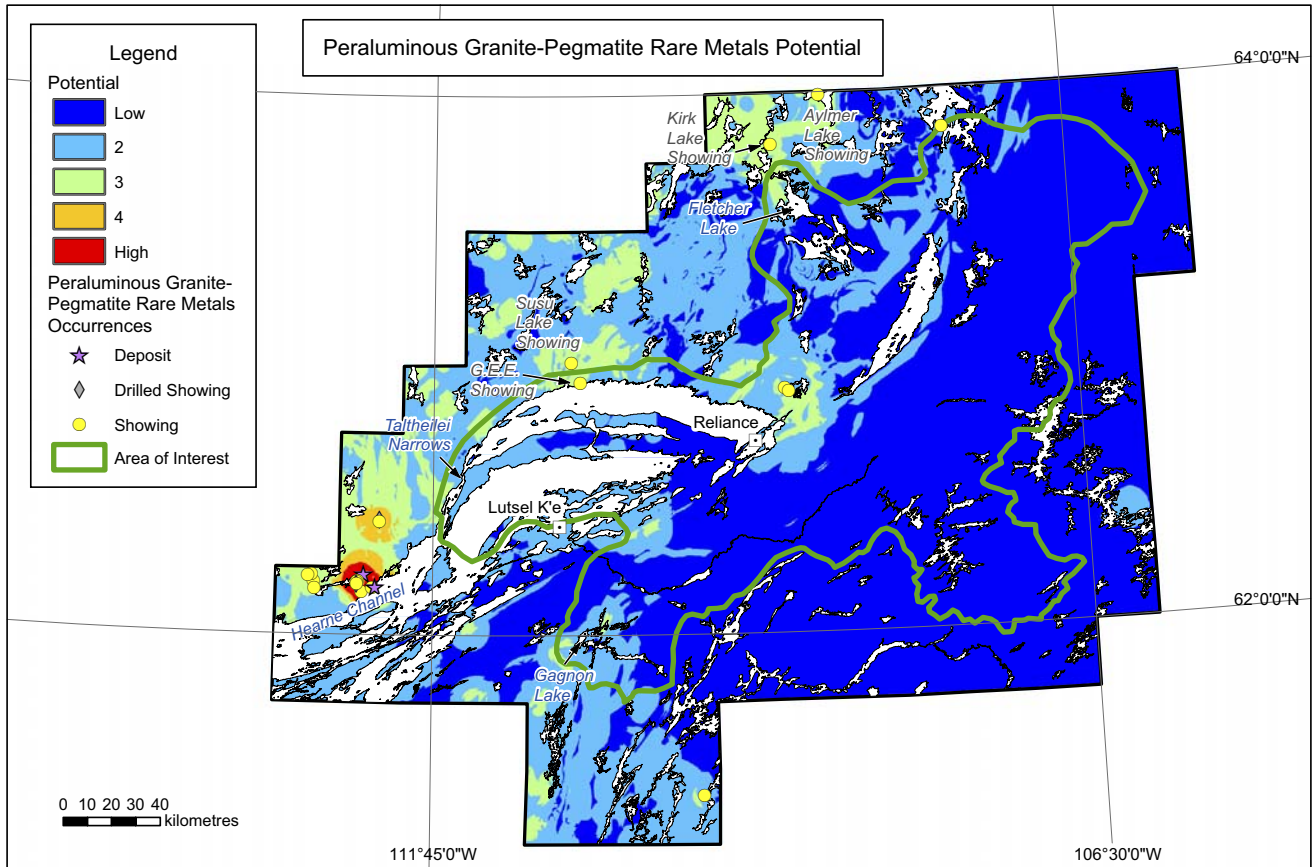
##### 8. Mississippi Valley-type lead-zinc

Although a number of veins of Mississippi Valley-type (MVT) are found in the Artillery Lake area, mineralization potential never exceeds moderate (score = 3). The areas of moderate potential include a significant portion of the Artillery Lake area and an area near Reliance (Fig. 9).

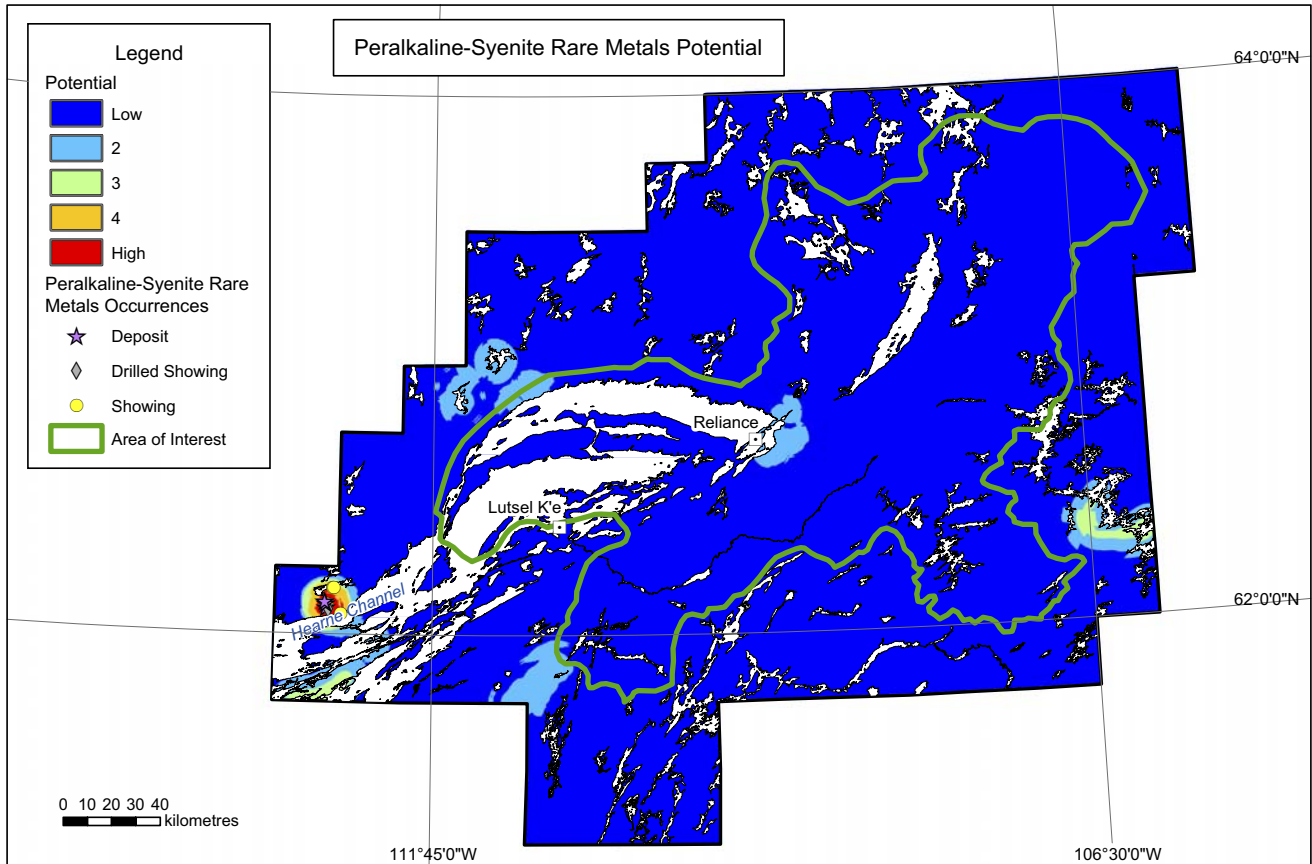
##### 9. Vein-hosted copper

There are many vein-hosted Cu prospects and showings within the AOC and there is an area of mineralization near Meridian Lake that has moderate-to-high potential (score = 4). This area includes 14 occurrences (4 drilled showings and 10 showings). Eight of these (3 drilled showings and 5

## Executive Summary



**Figure 4.** Map showing the modelled potential for peraluminous granite-pegmatite rare metal occurrences.



**Figure 5.** Map showing the modelled potential for peralkaline syenite rare metal occurrences.

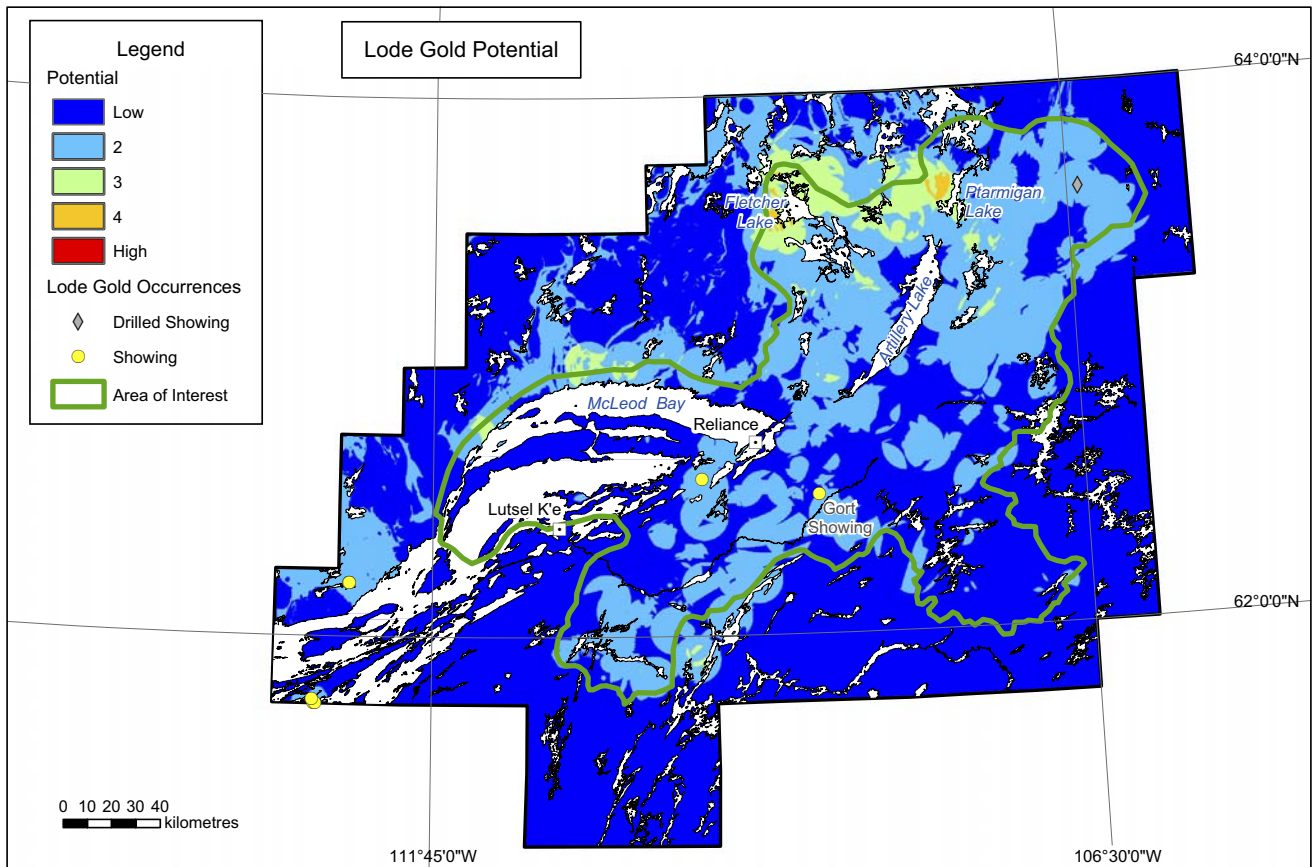


Figure 6. Map showing the modelled potential for lode gold occurrences.

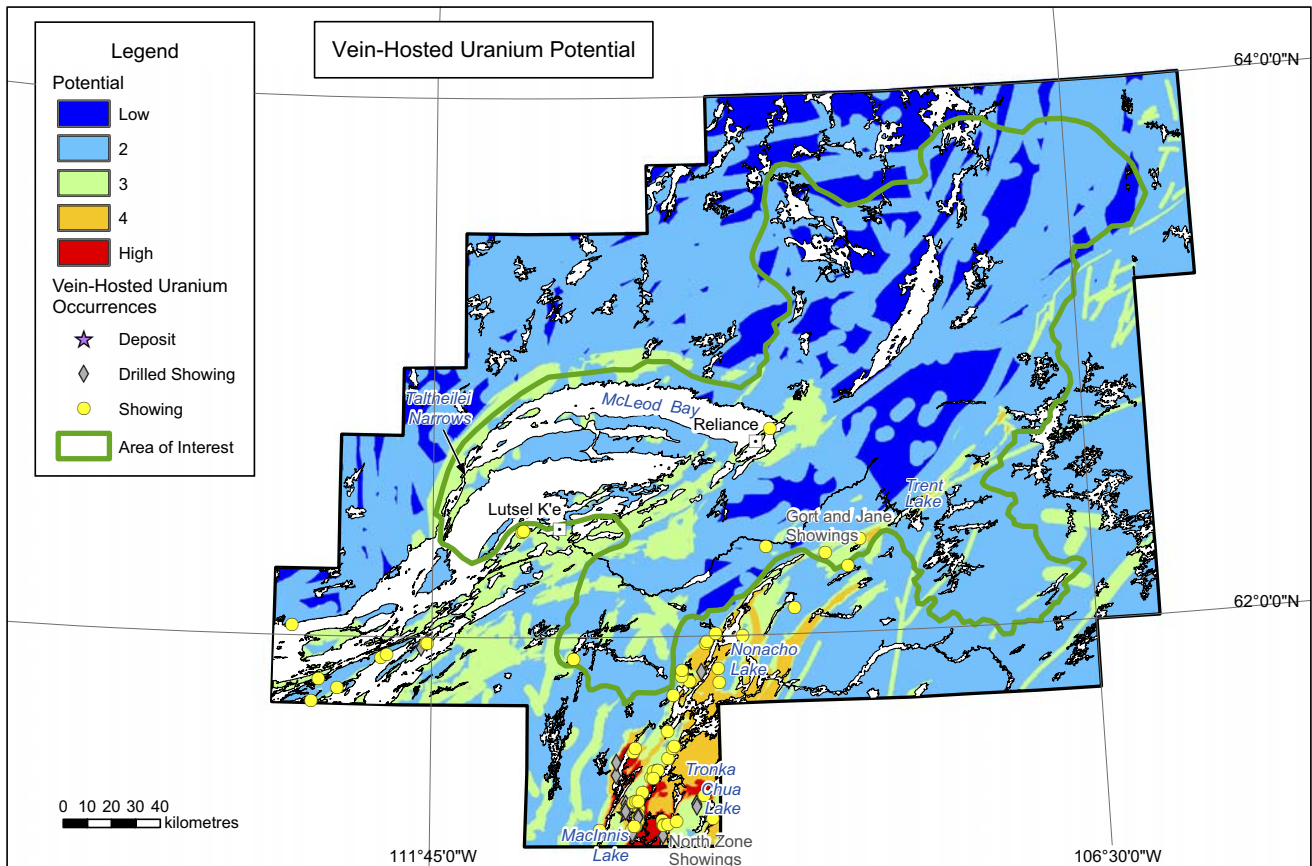


Figure 7. Map showing the modelled potential for vein-hosted uranium occurrences.

# Executive Summary

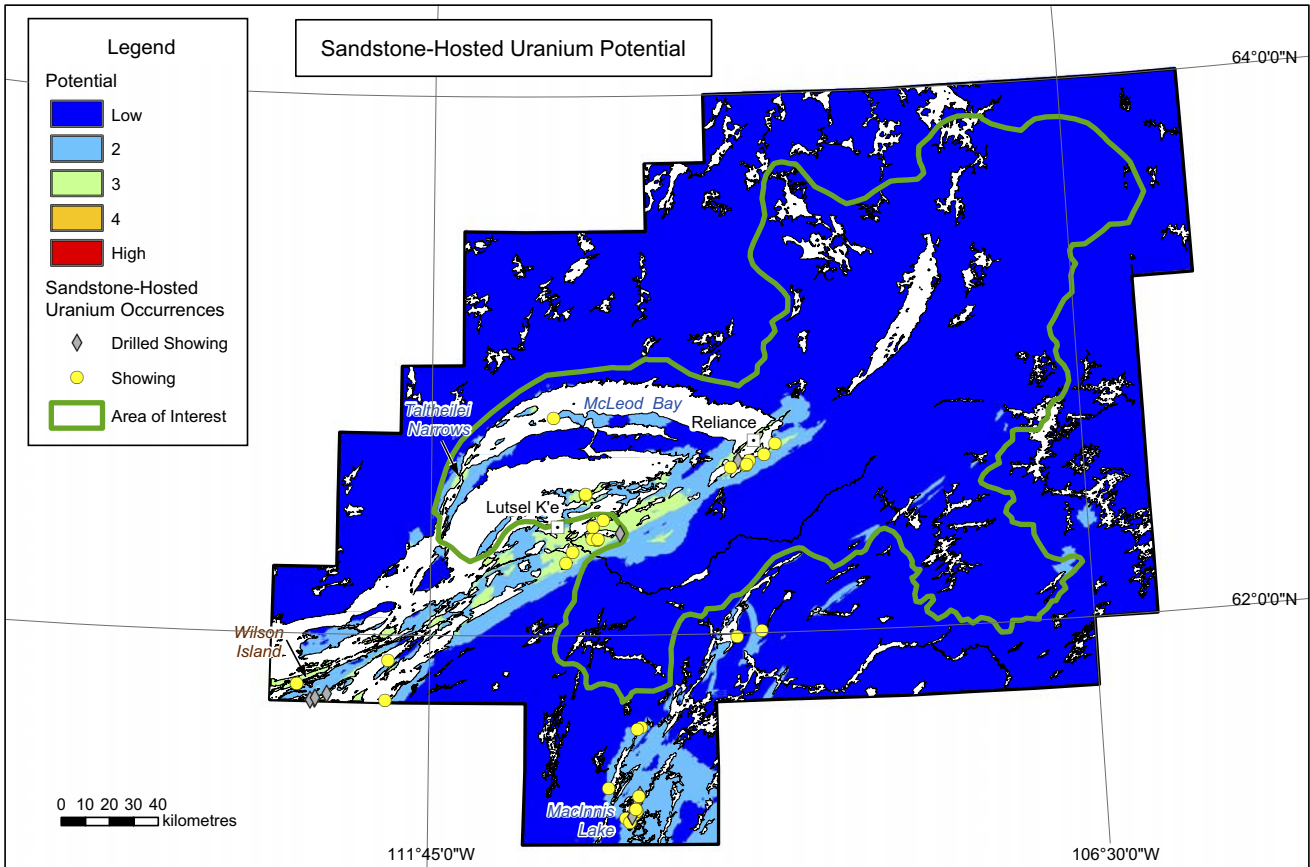


Figure 8. Map showing the modelled potential for sandstone-hosted uranium occurrences.

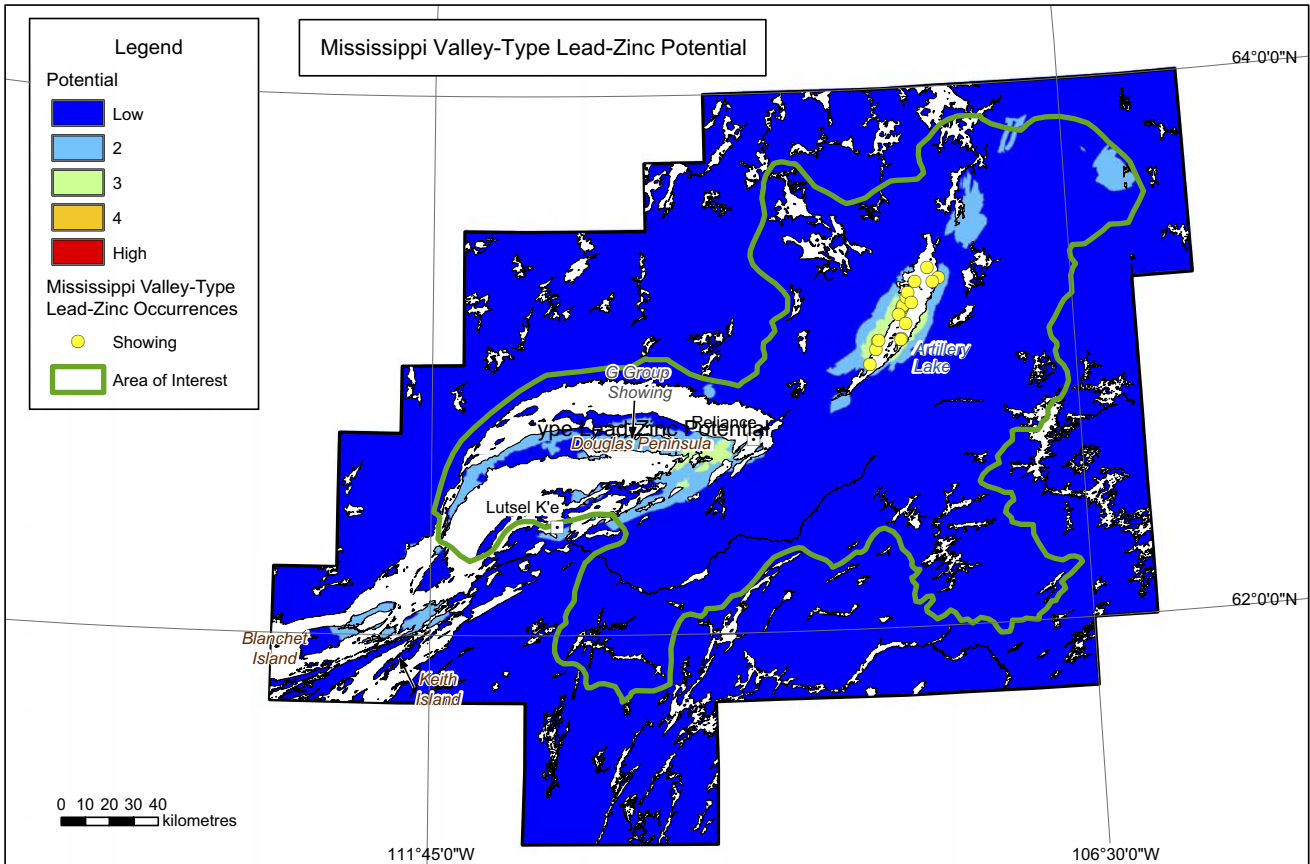


Figure 9. Map showing the modelled potential for Mississippi Valley-type occurrences.

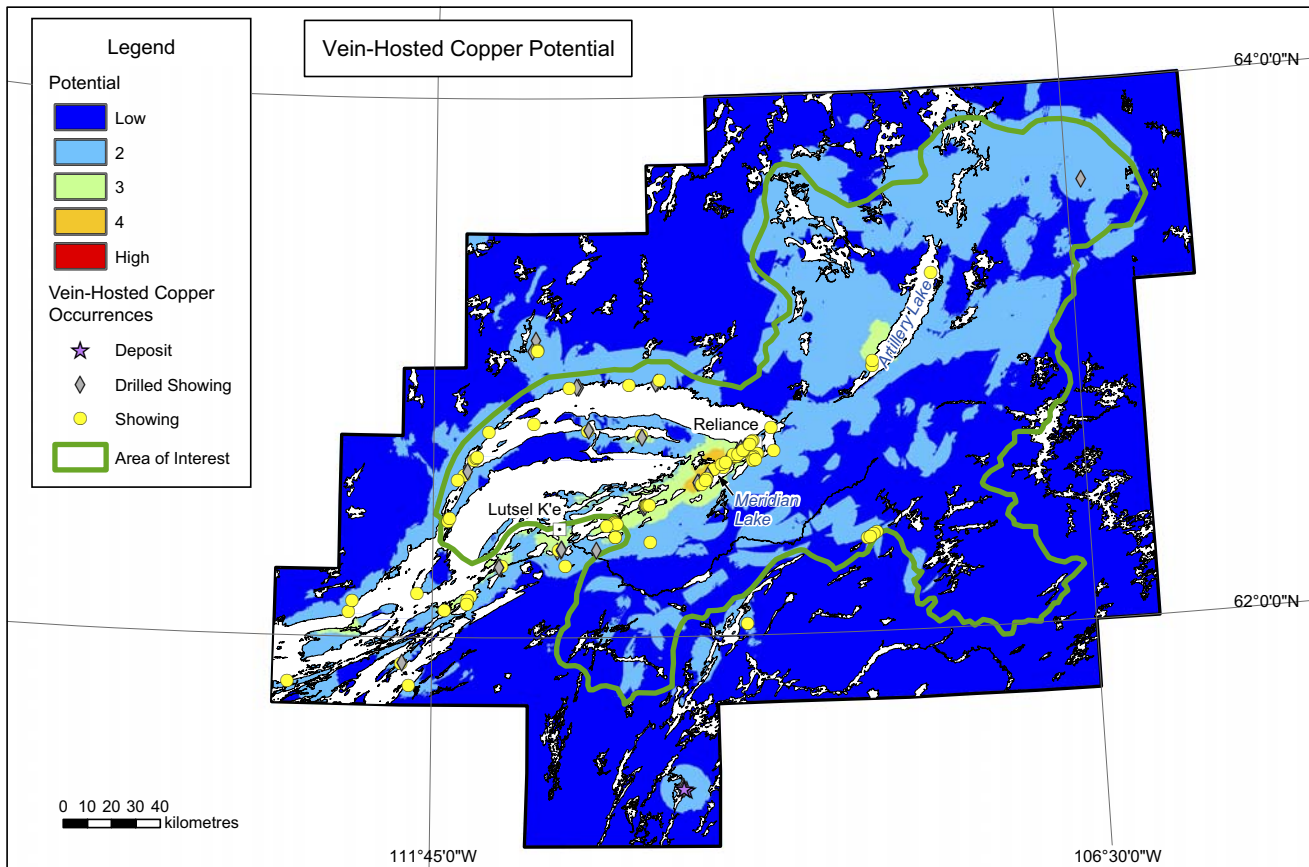


Figure 10. Map showing the modelled potential for vein-hosted copper occurrences.

showings) are auriferous (Fig. 10).

#### 10. Iron oxide-copper-gold

An area comprising two zone of moderate-to-high potential (score = 4) straddles the AOI boundary near Lutsel K'e. The larger patch zone includes 5 occurrences (4 drilled showings and 1 showing) that are very near the AOI boundary (Fig. 11).

#### 11. Magmatic nickel-copper sulphides

Mineral potential for this deposit type did not exceed moderate (scores  $\leq 3$ ) in the AOC. However, south of the AOI, there is a curvilinear cluster of 21 occurrences (9 drilled showings and 12 showings) that approaches the AOI boundary; within this cluster, there is a small area of moderate potential (score = 3) where 3 drilled showings and 3 showings are located (Fig. 12).

#### 12. Chromite

No chromite occurrences or layered mafic to ultramafic intrusions, which are diagnostic host rocks for chromite deposits, have been mapped in the AOC. Nevertheless, mineral grain counts indicate that these types of host rocks probably are present in the eastern part of the AOI, and have not yet been identified in outcrop. An extensive area of moderate potential (score = 3) is found north of Whitefish Lake, some of which is inside the AOI boundary (Fig. 13).

#### 13. Sedimentary exhalative

Although no sedimentary exhalative (Sedex) mineralization has been identified within the AOC, the mineral-potential model suggests moderate-to-high potential (score = 4) for this important deposit type in an area that straddles the AOI boundary near Lutsel K'e and extends to Reliance (well within the AOI). Seven of the eight occurrences (veins of barite and barite-sulphide, which may reflect Sedex prospectivity) occur within this area (Fig. 14).

The results of this study indicate that there are areas near the boundary of the Area of Interest (AOI) for the proposed park where the mineral potential is moderate-to-high or high (scores of 4 or 5, respectively). These key areas along the northern boundary of the AOI have very elevated potential for diamond and/or gold occurrences (Figs. 3 and 6). Some consideration should also be given to the areas near Lutsel K'e, along the Murky Channel Fault and McDonald Fault systems where the potential for IOCG, and/or Sedex, and/or vein-hosted copper occurrences is assessed as moderate-to-high (score = 4).

#### Hydrocarbon Potential

The possibility of petroleum accumulations can be dismissed unequivocally for the large areas of Archean to Paleoproterozoic igneous and intensely metamor-

# Executive Summary

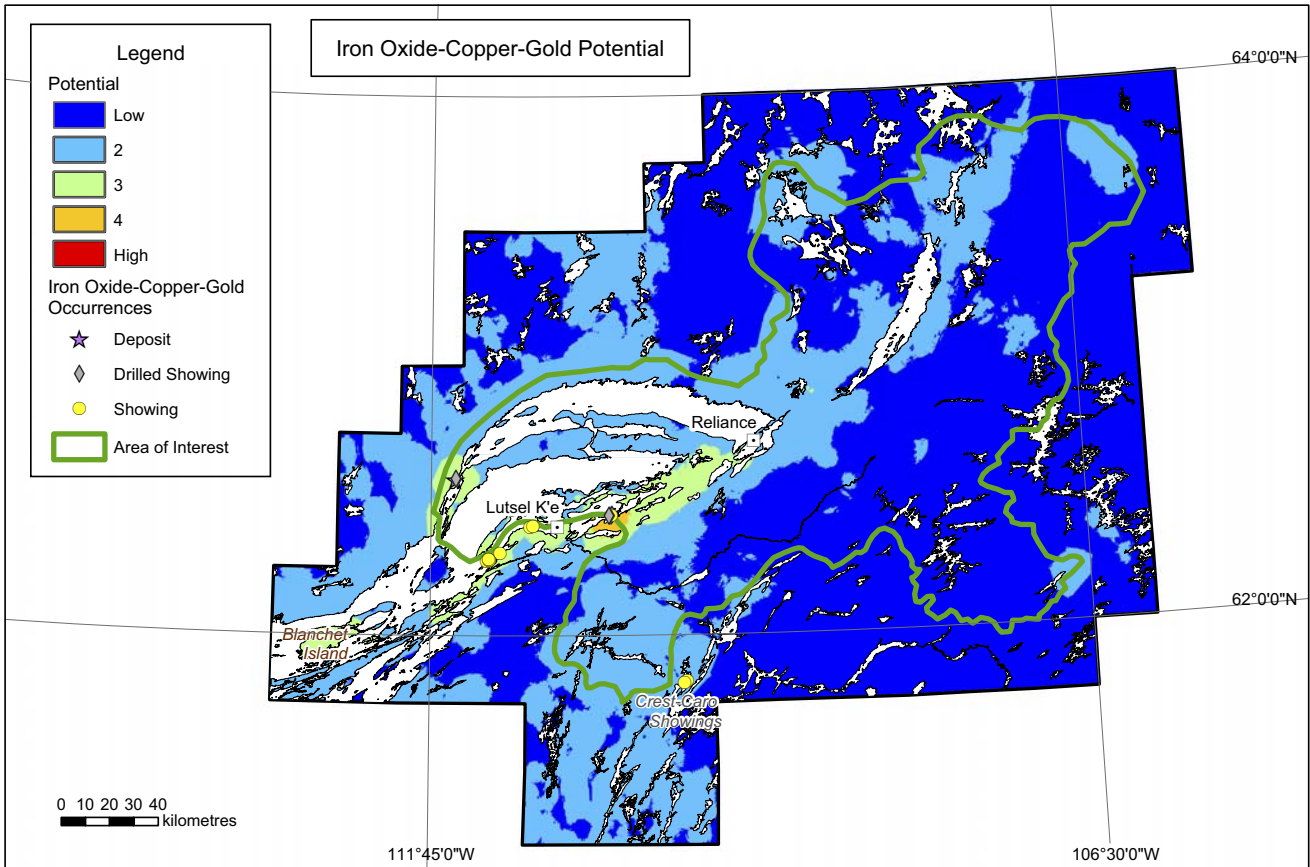


Figure 11. Map showing the modelled potential for iron oxide-copper-gold (IOCG) occurrences.

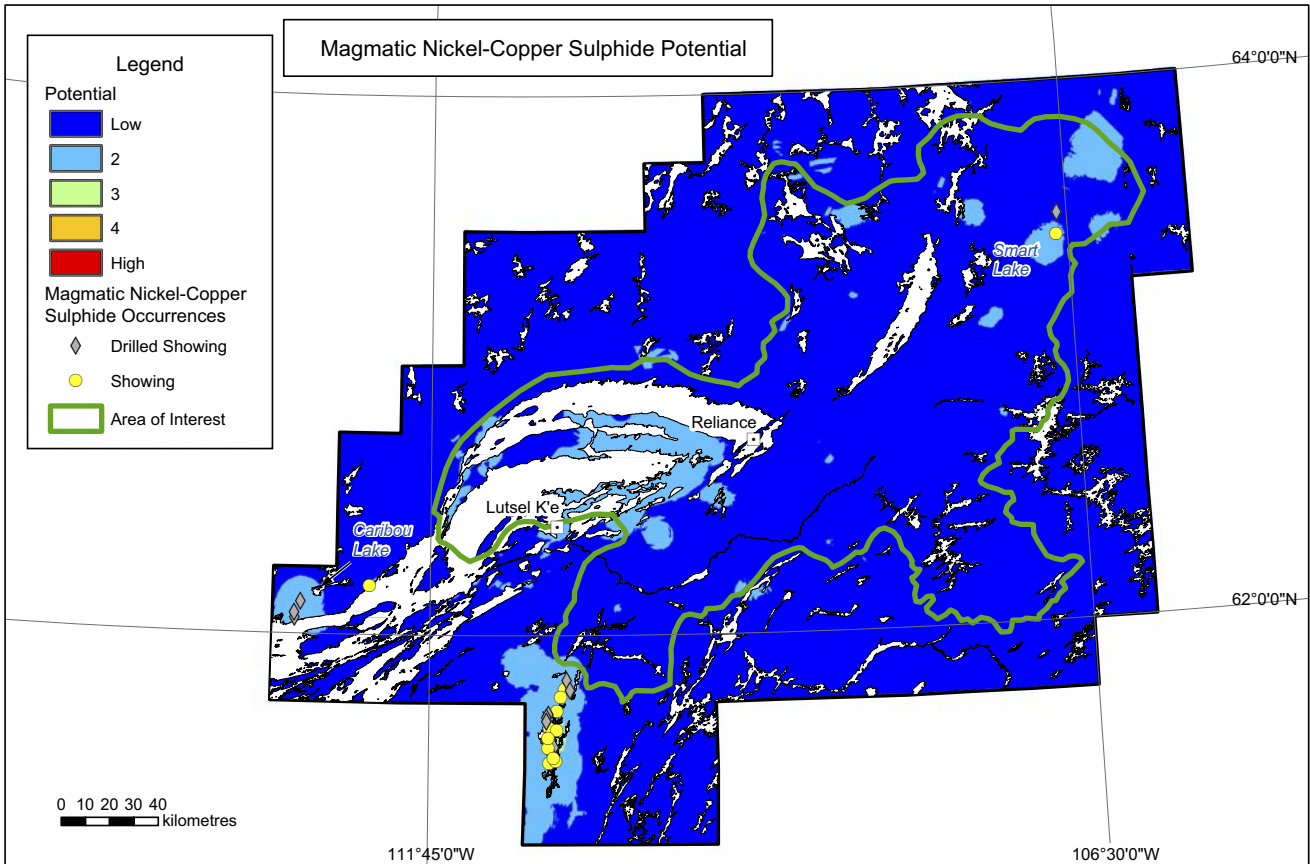


Figure 12. Map showing the modelled potential for magmatic nickel-copper sulphide occurrences.

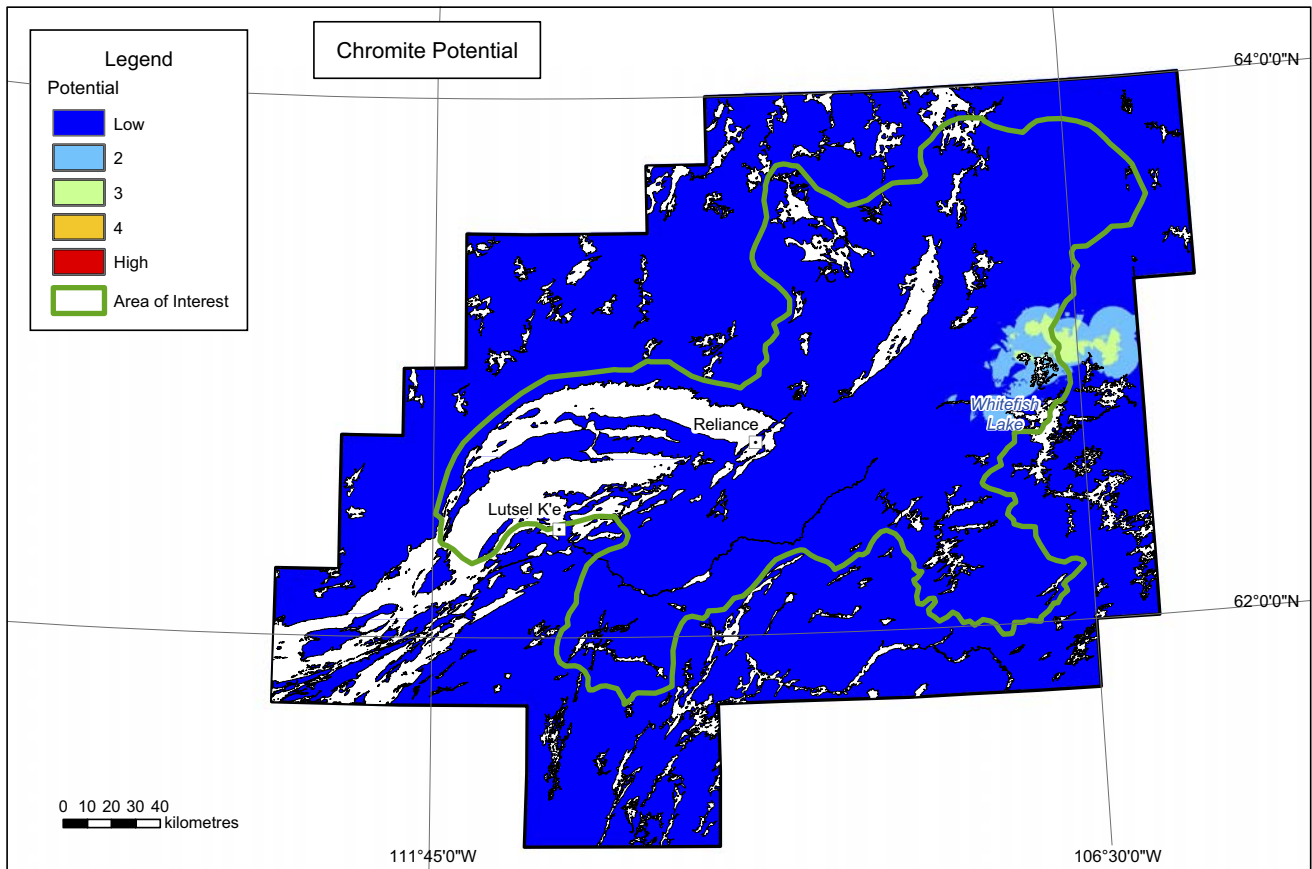


Figure 13. Map showing the modelled potential for chromite occurrences.

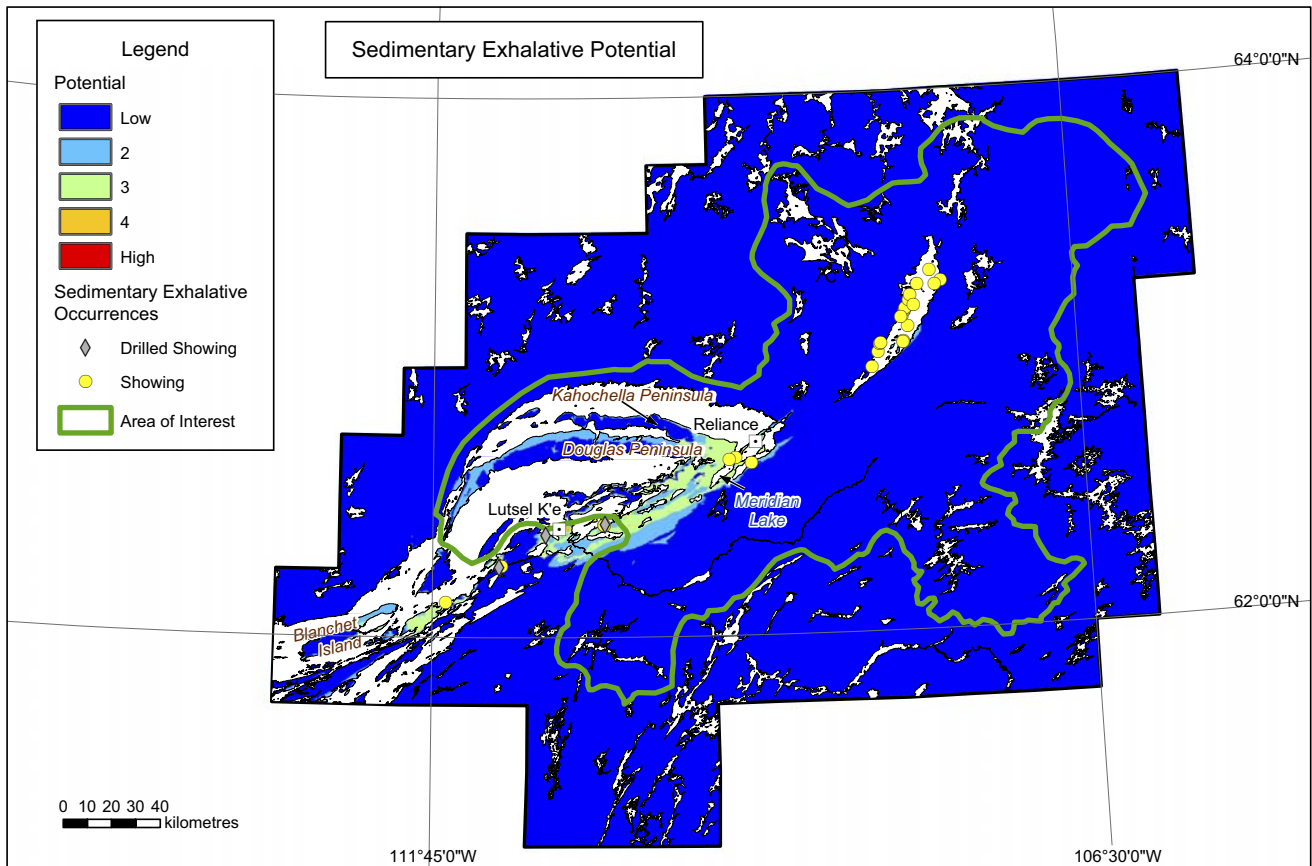
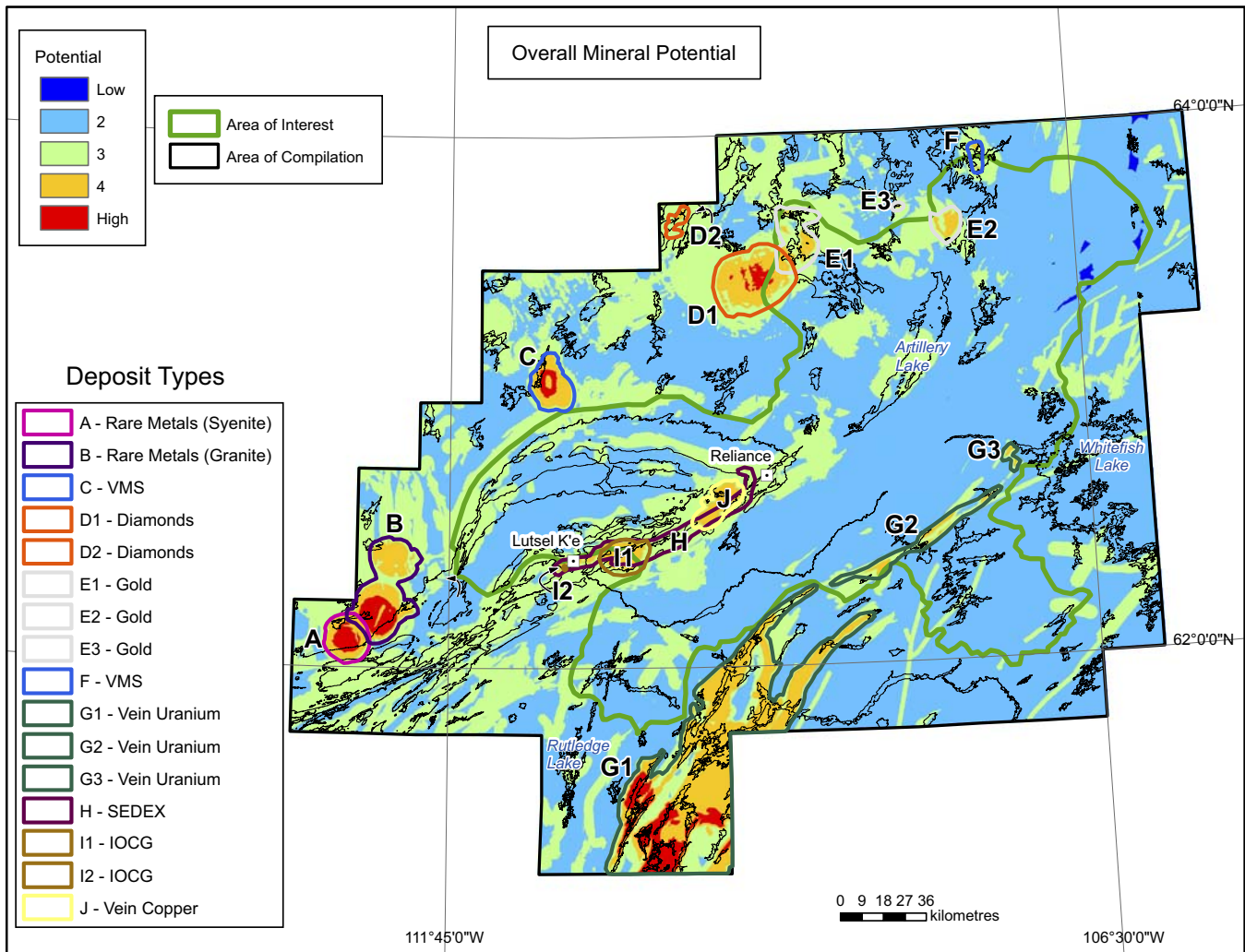


Figure 14. Map showing the modelled potential for sedimentary exhalative (Sedex) occurrences.

## Executive Summary



**Figure 15.** Overall mineral potential summary map in the Area of Compilation for the proposed Thaidene Nene park reserve.

phosed bedrock exposed across Slave Craton, the Taltson magmatic-tectonic zone, and the northwest Churchill Terrane, which covers most of the Area of Interest. For the remaining portions of the AOI, the unmetamorphosed Paleoproterozoic East Arm fold and thrust belt in the southwestern portion of the proposed park, there is also little possibility of unconventional oil and gas accumulation and preservation.

### Composite Resource Potential

An overall mineral-potential map was created by identifying areas (or spatial ‘patches’) where mineral potential was rated as moderate-to-high or high (scores of 4 or 5, respectively) for any of the thirteen deposit types being examined and combining the results. This combined map was then annotated and interpreted in order to summarize which type(s) of deposits are predicted in each patch. (Fig. 15)

### Caveats

The results of this mineral and energy resource assessment are based on the best geoscience information cur-

rently available. They reflect the present knowledge of the geology and mineral deposit models known or thought to be important in the AOI for the proposed Thaidene Nene national park. The GIS-modelling approach employed in this study was effective for managing the large amount of spatial data that were interpreted, for documenting the methodology, and for ensuring reproducible results. However, it should be noted that geological knowledge is not static; it is continually being refined and expanded. In addition, the GIS model was “expert” driven, which introduces some subjectivity. As a result, there will always be uncertainties associated with resource potential analysis that can only be lessened through renewed investigations using the most current knowledge as future land use issues arise.

### REFERENCES

- Roscoe, S.M., Gandhi, S.S., Charbonneau, B.W., Maurice, Y.T., and Gibb, R.A., 1987. Mineral resource assessment of the area in the East Arm (Great Slave Lake) and Artillery Lake region, N.W.T., proposed as a national park (NTS 75J, K, L, N, O); Geological Survey of Canada, Open File 1434, 92 p.

